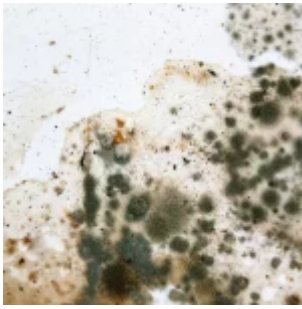


Breaking the mould on mould!



Mould. What is it and does Poor Ventilation cause it?

Mould fungi are almost always present in our environment, surviving for years undetected in the dry. When humidity and stale air combine and create the perfect conditions for mould, previously dormant mould spores grow.

Mould is one of the structures that certain fungi can form. The dust-like, coloured appearance of moulds is due to the formation of spores – these spores are the dispersal units of the fungi.

Mould on walls develops when mould spores hit damp walls. Poor ventilation can cause mould due to high humidity in the air and condensation. In the right conditions, mould can develop in 24 – 48 hours. Over time a small mouldy spot can turn into brown or black patches. To treat mould on walls effectively, the source needs addressed and rectified before effective cleaning can commence.

Did you know 80% of Mould is actually due to Condensation which is caused by Poor Ventilation!

Health Hazards of Mould

Mould can cause a number of health problems. Poor Ventilation and associated black mould growth can affect the immune system. Moulds generate allergens, which can cause irritation. Some moulds even emit toxic substances. Some people are more susceptible to mould spores than others, such as elderly, immune compromised or children. Black mould symptoms can include;

- **An increase in sneezing**
- **A runny nose**
- **Eye inflammation causing reddening**
- **Skin rashes or inflammation**
- **An otherwise unexplained increase in attacks for asthma sufferers**

How can good ventilation help combat mould?

Black Mould on walls is caused by condensation, which is caused by poor ventilation.

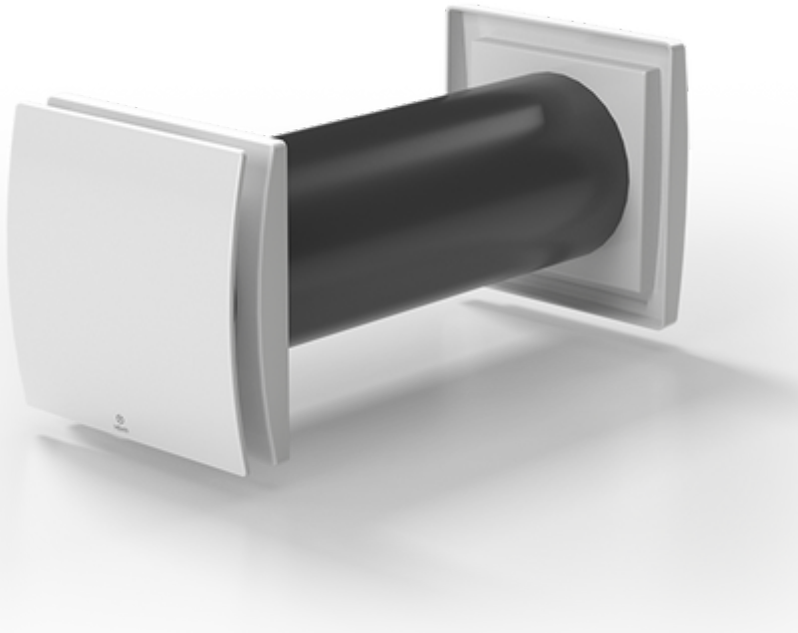
Condensation is one of the biggest sources of mould growth on walls. Condensation occurs when water vapour contained in the air condenses on cold surfaces and creates a damp environment. There are many reasons why a house might have excess levels of condensation:

- ***Lack of ventilation***
- ***Obstructed airflow***
- ***A high level of moisture-creating activities like cooking, washing and drying.***

How are VENTI tackling MOULD in our homes?

At VENTI we have several systems to combat mould formation.

Our Decentralised systems are very popular due to their simple design, efficient running and their easy fit.



The FLUXO:

FOR HABITABLE ROOMS

- This continuous, mechanical fresh air supply unit improves living conditions by supplying fresh air into habitable dwellings using correct and sustainable methods.
- The unit supplies fresh filtered air in from outside for 70 seconds then reverses and extracts the stale air outside.
- The 70 second cycle is continuous 24/7.
- Over 82% of the heat is retained inside the property due to an innovative heat exchanger located inside the core.
- If optional switch is fitted, operation can to be set to extract only (ideal for overheated rooms)



The ARIA

DECENTRALISED MECHANICAL CONTINUOUS EXTRACT UNIT FOR WET ROOMS

This continuously running unit extracts air from any wet room. In normal mode the fan will draw air out of the room on trickle speed. If the humidity rises above the pre-set level the fan will then boost until the humidity drops, then it will return to trickle speed. Also includes run-on timer settings and a manual switch activation for boost mode.

The benefit of this unit over a conventional intermittent extract fan is that moisture in the room is continuously drawn out. On average, a standard extract fan will shut off after 15 minutes, but in reality a shower tray, for example, takes over 90 minutes to dry.

This product will also remove indoor air-borne pollutants.

We Offer Specific & Tailored Solutions depending on your needs.

Head over to our Products page : www.venti-group.com/shop/ and view our lovely portfolio, then get in touch with our Expert team for guidance & Tailored solutions.

We are VENTI - the Ventilation experts. Let us take care of your air!